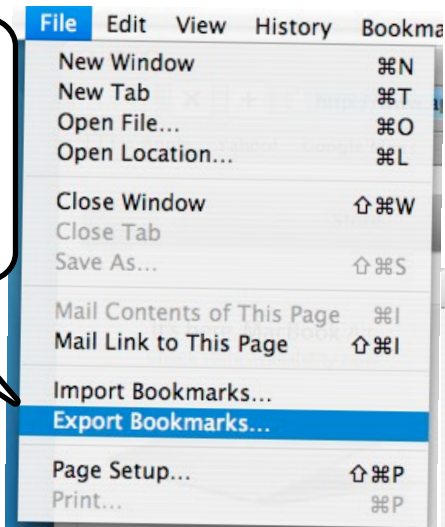


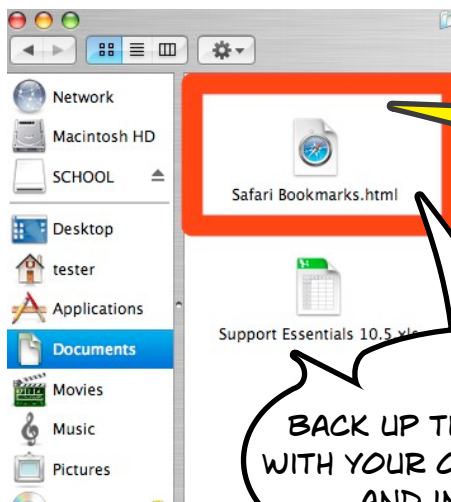
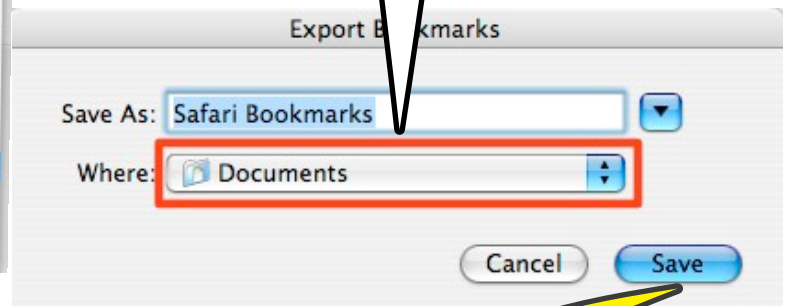
SAVE YOUR BOOKMARKS!

NOW THAT YOU HAVE FINALLY FOUND ALL THE COOL WEB PAGES... YOU DON'T WANT TO LOOSE THEM. HERE IS HOW YOU CAN BACK THEM UP AND IMPORT THEM INTO SAFARI AGAIN LATER.

OPEN SAFARI AND THEN UNDER FILE, CLICK ON EXPORT BOOKMARKS



IT WILL ASK YOU WHAT TO SAVE IT AS AND WHERE. THIS IS IMPORTANT INFORMATION TO REMEMBER SO YOU CAN BACK IT UP.



After you save your bookmarks. Go to the location and double check.

BACK UP THIS FILE ON A CD WITH YOUR OTHER DOCUMENTS AND INFORMATION

FIND YOUR BACK UP, HIGHLIGHT IT, THEN CLICK ON IMPORT. AND YOUR BOOKMARKS WILL BE IMPORTED.

TO IMPORT THEM BACK...

OPEN SAFARI ON THE COMPUTER YOU WANT TO IMPORT YOUR BOOKMARKS TO.

UNDER FILE, CLICK ON IMPORT BOOKMARKS

