

**Nome Public Schools
Request for Proposal
Internal Connections 08/09**

Bids must be received no later than 4:00 pm 01/16/2009

Nome Public Schools is seeking work in buildings A and D of the Nome Beltz Campus as well as Nome Elementary School. In summary we wish to install a CAT 5 or better network and relocate an existing telecommunication closet in Building D, address phone issues in both buildings A and D as well as install a robust wireless solution for the district. All items are contingent on Nome City Schools qualifying for internal connections and maintenance via the E-Rate program. All work must be complete by August 25, 2009.

Questions and responses to this RFP can be directed to
Robin Johnson, Director of Technology
Nome City Schools
(907) 443-6203 rjohnson@nomeschools.com

1. New Telecommunication Closet (M19)

Must have a 4 post rack with built in power surge protection* and ample Uninterruptible Power Supply** (UPS)/Battery Backup

Provide and install 2- 48 110/1000 with gigabit uplink Network Switches compatible with current Cisco network. Must be able connect the LAN via current fiber connection and/or new fiber install. This Fiber run is approx 800 – 1000 ft long and runs through a tunnel that connects buildings D and A. Fiber currently terminates in room D127 of Building D and A175 of building A and runs through a junction box in Room M8 in building A. This fiber provides connectivity to Building B (GYM) as well.

Remove equipment from Current Telecommunications Closet (D127) and Demo obsolete network. Install rack, patch panel, jumpers, new equipment and some existing equipment in M19.

2. Install Cat 5 or better, plenum rated network and patch panel in Building D of Nome Beltz Campus. This building houses the Nome Public Schools Charter School and District offices.

This building is currently connected to the rest of the network via a fiber uplink that runs from the main telecommunication closet in the High School to room. This Fiber termination of this uplink will need to be moved to the new telecommunications closet (M19) and one additional fiber run needs to be installed to allow for expansion of our network.

All network cabling must be CAT 5 or better and Plenum Rated.

All Network connections must be surface mount or run under the building. The building has concrete floors and the majority of the existing network is under the building. All cables must punch down in new telecommunication closet (M19).

All Cable, Connectors and couplers, Jacks, panels, faceplates and wire managers, Conduit and raceway and other cabling components necessary to transport information all the way to individual classrooms or eligible administrative areas must be included in bid.

Demo all existing cables.

**Building D Rooms and Network Drops needed
(Please see attached floor plan)**

Office D101 – 4 network drops 2/2
Office D102 – 4 network drops 2/2
Office D103 – 4 network drops 2/2
Office D104 – 4 network drops 2/2
Office D105 – 4 network drops 2/2
Office D106 – 4 network drops 2/2
Office D107 – 4 network drops 2/2
Office D 109 – 6 network drops 2/2/2 (Crises command room)
Workroom – D110 2 network drops
M19 – NEW TELECOMMUNICATION Closet
D127 – EXSISTING TELECOMMUNICATION Closet
Office D121 – 8 network drops 2/2/2/2
Office 124 – 4 network drops 2/2
Office D27 – 2 network drops 2
Office D28 – 2 network drops 2
Office D29 – 4 network drops 2/2
Classroom D125 – 13 network drops 2/2/3/3/3
Classroom D122 – 30 network drops 3/3/3/3/3/3/3/3/3/3
Classroom D123 – 4 network drops 2/2
Classroom D116 – 6 network drops 3/3
Classroom D21 – 6 network drops 2/2/2
Office D12 – 2 network drops

3. BUILDING D PHONES

Extend existing 25 pair phone line panel in building D to the new telecommunications closet (M19). Include phone in new patch panel so that line access can be controlled by NPS.

BUILDING A PHONES

Relocate 30 phone lines to existing server rack so that NPS can control access.

4. WIRELESS ACCESS POINTS

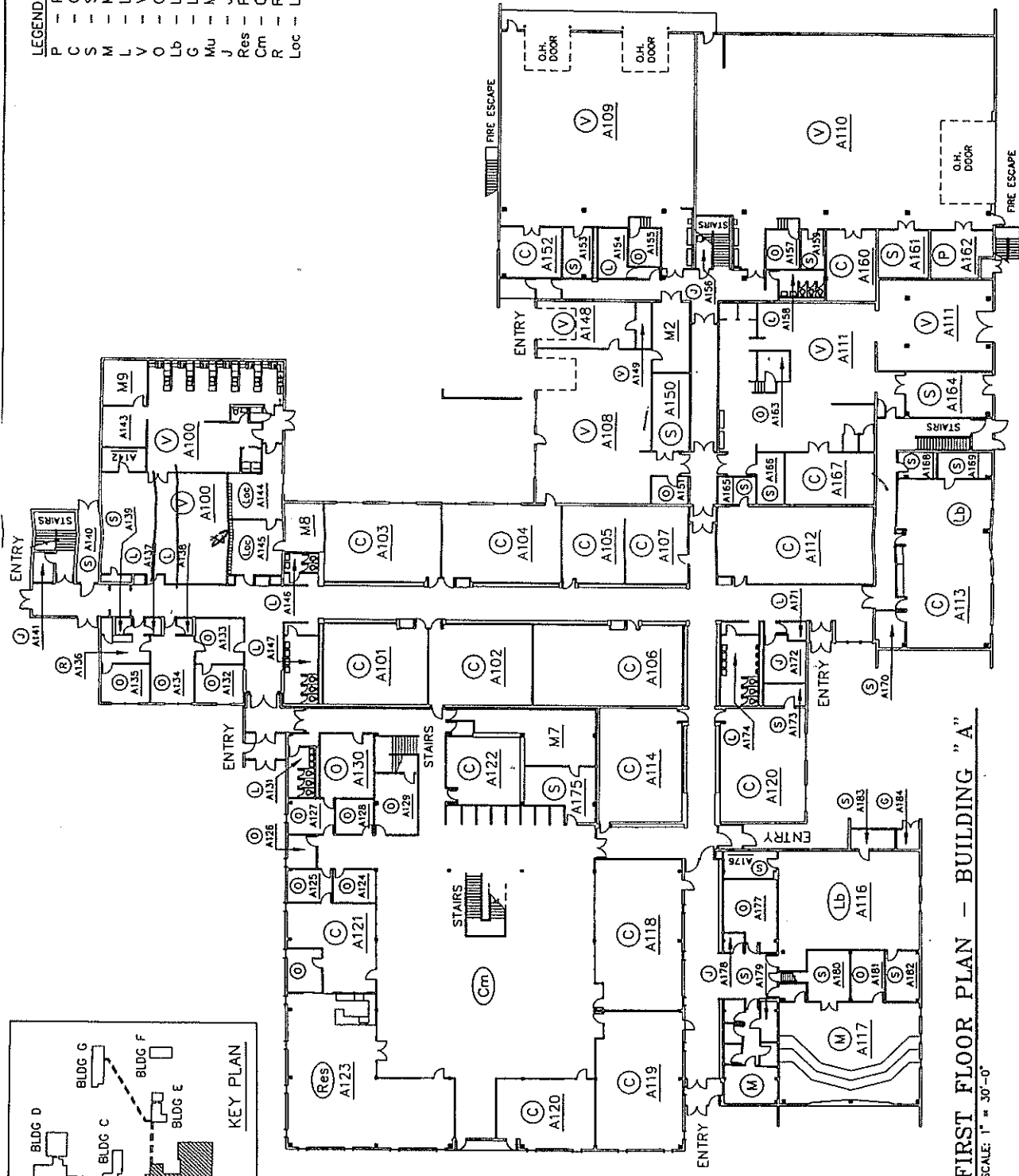
Install robust, managed wireless access points in buildings A and D of the Nome Beltz Campus and Nome Elementary School.

VERIFY SCALES:
 THIS BAR IS
 1" ON ORIGINAL
 DRAWING, ADJUST
 SCALE IF NOT 1"

NOME PUBLIC SCHOOLS
 NOME BELTZ JR.-SR. HIGH SCHOOL
 COMPLEX - BUILDING "A"

DATE: 06-19-95
 PROJECT: 9505
 SHEET NO. A-1

- LEGEND:
- P - PAINT ROOM
 - C - CLASSROOM
 - S - STORAGE
 - M - MECHANICAL
 - L - LAVATORY
 - V - VO. TECH. SHOP
 - O - OFFICE
 - Lb - LABORATORY GAS
 - G - LABORATORY
 - Mu - MUSIC
 - J - JANITORIAL
 - Res - RESOURCE
 - Cm - COMMONS
 - R - RECEPTION
 - Loc - LOCKERS

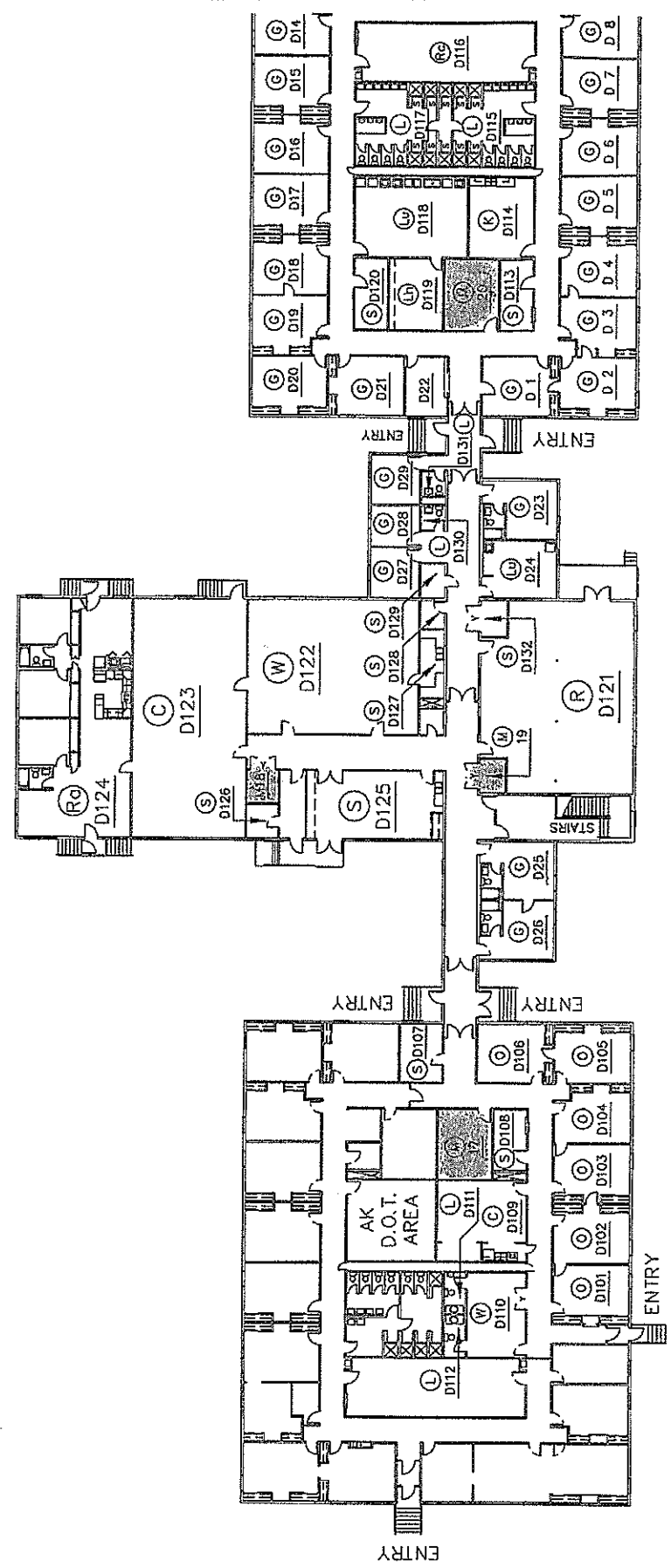


FIRST FLOOR PLAN - BUILDING "A"
 SCALE: 1" = 30'-0"



RC -
O

KEY PLAN



SCHOOL DISTRICT OFFICE AREA

DORMITORY



FIRST FLOOR PLAN - BUILDING "D"
 SCALE: 1" = 1'-0"