

## Using the Spotlight



The Spotlight is a presentation tool. It masks part of the flipchart, so only a portion is visible. The default settings of a black background and circular white spotlight simulate an actual spotlight and help to focus attention.

From the Tools Menu, select **Spotlight**.

You can define options for displaying the Spotlight Tool in the 'Spotlight Settings' Dialog Box:

### Border width

Move the slider to increase or decrease the width of the border, which surrounds the spotlight area. The range is between 0 and 20 pixels.

### Border color

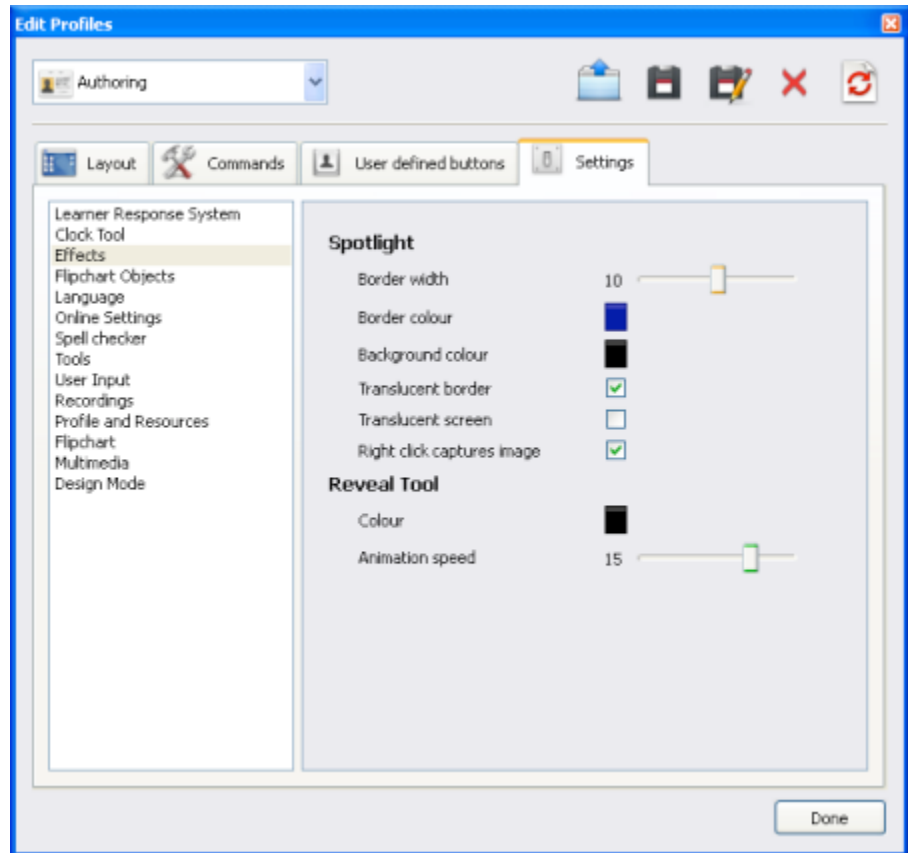
To change the color of the spotlight border, click on the Color Box and select a color from the CColor Palette.

### Background colour

Click here to select the color of the non-spotlighted area when using the Spotlight Tool.

### Translucent border

Select the checkbox if you would like to see through



the spotlight border. Clear the checkbox if you prefer to have the spotlight border as a solid color.

### **Translucent screen**

Select the checkbox if you would like to see through the spotlight screen (the darkened area that covers the Flipchart or Desktop window). Clear the checkbox if you prefer to have the spotlight screen as a solid color.

### **Right-click captures image**

With one of the spotlights activated, right-click on the page and an image of the spotlight area will be pasted on your current flipchart page.